



# 2024 Annual Report



## TABLE OF CONTENTS

3	About Us
4	A Message from Our CEO
5	2024 By the Numbers
6	Highlights from 2024
7	In the News
8	Awards
9	In Our Centers
10	Philanthropic Impact

## PACE SOUTHEAST MICHIGAN OFFERS ALL-INCLUSIVE HEALTHCARE TO OLDER ADULTS

PACE Southeast Michigan is a community-based program for people aged 55 or older who are eligible for nursing home care but want to remain independent in their homes. Our team works with participants to develop personalized, all-inclusive care plans that promote independence, safety and dignity.

## OUR PARTICIPANTS

PACE Southeast Michigan participants...

- must be 55 years or older
- must live in our service area
- must qualify for nursing home level care
- can live safely in the community with support from PACE Southeast Michigan.



## CORPORATE OFFICE

21700 Northwestern Highway  
Suite 900  
Southfield, MI 48075

## OUR CENTERS

### Clinton Township

19700 Hall Road  
Clinton Township, MI 48038

### Dearborn

15401 North Commerce Drive  
Dearborn, MI 48120

### Detroit

17330 Greydale  
Detroit, MI 48219

### Eastpointe

17401 East Ten Mile Road  
Eastpointe, MI 48021

### Pontiac

823 Golf Drive  
Pontiac, MI 48341

### Southfield

24463 West Ten Mile Road  
Southfield, MI 48033

### Sterling Heights

35501 Mound Road  
Sterling Heights, MI 48310

### Thome Rivertown

250 McDougall  
Detroit, MI 48207

### Westland

360 S Merriman Road  
Westland, MI 48186

## OUR LEADERSHIP

**Mary Kummer Naber**  
President and CEO

**Jeff Burmeister**  
Chief Financial and  
Health Plan Officer

**Donna Emch**  
Chief Clinical Officer

**Amy Katz**  
Chief Growth Officer

**Sandra White**  
Vice President of Center  
Operations and Collaboration



PACE Southeast Michigan Executive Team

## 2024 BOARD OF TRUSTEES

**Roger L. Myers, Board Chair**  
Presbyterian Villages of Michigan

**David F. Shepherd, Board Vice Chair**  
Henry Ford Health

**N. Charles Anderson**  
Urban League of Detroit, Southeast Michigan

**Bruce Blalock**  
Presbyterian Villages of Michigan

**J. Douglas Clark**  
Henry Ford Health

**Sean Drake, MD**  
Henry Ford Health

**Susan Hawkins**  
Henry Ford Health

**Manu K. Malhotra, MD, FACEP**  
Henry Ford Health

**Mary Kummer Naber**  
PACE Southeast Michigan

**Katrina R. Summersett**  
Presbyterian Villages of Michigan

**Nutrena Tate, MD**  
University of Detroit Mercy

## OUR MISSION

PACE Southeast Michigan is a unique health plan and care provider committed to keeping chronically ill older adults in their homes by caring for their medical, psychosocial and spiritual needs.

## OUR VISION

As a top performing PACE program, PACE Southeast Michigan will help keep over 3,000 older adults with chronic conditions independent by 2028.

## OUR VALUES

- Extraordinary Care
- Collaborative Teamwork
- Inspired Achievement
- Accountability
- Adaptive Growth



## A MESSAGE FROM OUR PRESIDENT AND CEO

As I reflect on 2024, I am inspired by the opportunities this past year brought PACE Southeast Michigan. Our team continues to emphasize our values of Collaborative Teamwork and Adaptive Growth, constantly creating innovative ways to provide high quality care to the participants we all care so deeply about. Our team's genuine love for participants creates an environment unlike any other. I am so grateful for the opportunity we have to serve more and more people every year.

This past year brought unique challenges as our organization underwent the first stage of a reorganization, putting more emphasis on localized teams within our centers. This change was challenging for the whole team, but I am proud of our determination and focus on care that ultimately set us on a better path for the future.

Some of our proudest moments of the year are:

- Increasing our overall participant census by about 300 people and beginning to serve over 2,000 participants in the fourth quarter.
- Opening our ninth center in Westland, with about 120 participants enrolled on day one. There is such a need for our unique care model, and it's so exciting that we can continue expanding to meet that need.
- The hard work and care of our team led to an increased participant satisfaction score of 85%. During a year that brought so much change, I am so proud that our team's dedication to participants never wavered.

Our company also celebrated its 30th anniversary in 2024. It has been humbling and inspiring to reflect on our growth during that time, especially in the last 10 years I've been fortunate enough to lead here. Our mission is to provide older adults with an alternative to nursing home care that empowers them to remain safe and independent in the homes and communities they love. Through the hard work and passion of our team, we're able to be good stewards of that mission.

Thank you for your continued support and partnership over the last year. I look forward to seeing all we accomplish this year as we journey forward together.

Sincerely,

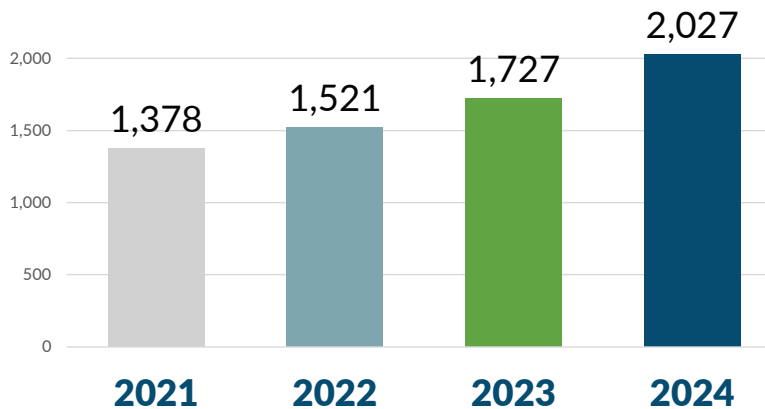


Mary Kummer Naber  
President and CEO  
PACE Southeast Michigan



# 2024 BY THE NUMBERS

## YEAR-END CENSUS



**While 100% of our participants are nursing home-eligible, 96% live in the community!**



**74**  
is the average  
age of our  
participants



**415,425**  
nutritious  
meals  
served



**1,850,000**  
miles driven by  
PACE SEMI  
buses

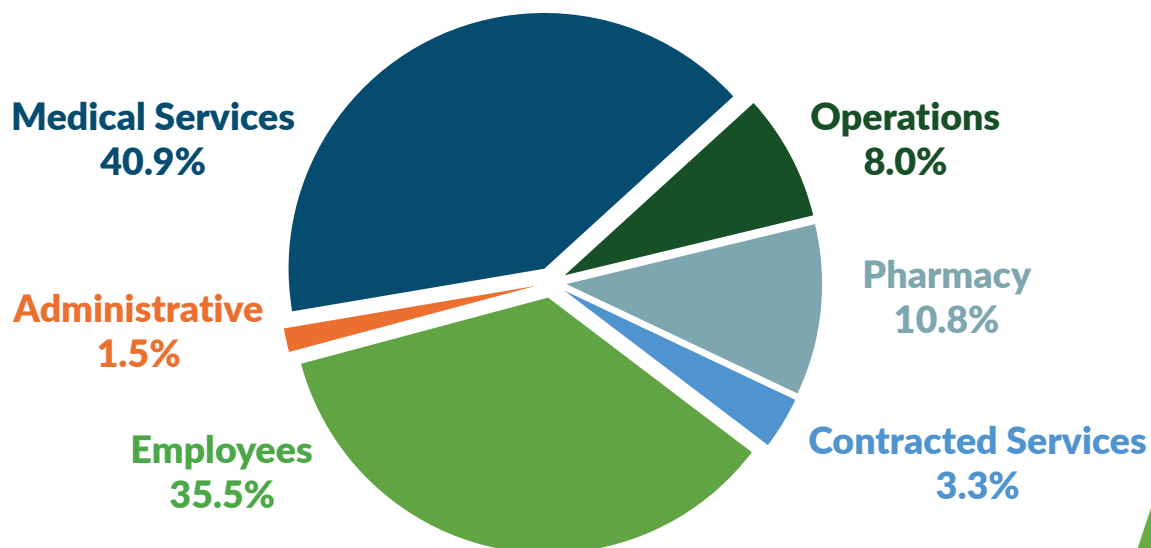


**122,510**  
hours of  
home care  
provided



**250,000**  
no-cost  
perscriptions  
filled

## EXPENSES



# HIGHLIGHTS FROM 2024

## OUR NINE CENTERS THROUGHOUT SOUTHEAST MICHIGAN SERVE OVER 2,000 OLDER ADULTS!

### Wayne County

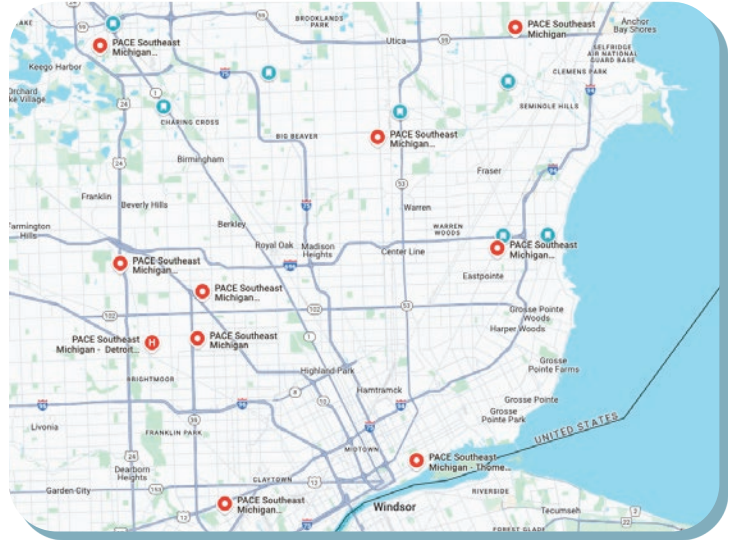
- Dearborn
- Detroit
- Thome Rivertown
- Westland

### Oakland County

- Pontiac
- Southfield

### Macomb County

- Clinton Township
- Eastpointe
- Sterling Heights



## PACE SOUTHEAST MICHIGAN OPENS FOURTH WAYNE COUNTY CENTER

We opened our ninth center in Westland on Dec. 9, 2024, with much support from the community! Guests at our grand opening including Michigan Lt. Governor Garlin Gilchrist and Westland Mayor Kevin Coleman.

This new center is part of the Village of Westland campus, owned by our partners at Presbyterian Villages of Michigan. We are so grateful for their continued partnership!





## FRESH FROM THE FARM

Thanks to Ford Philanthropy and Enterprise Community Partners / Thome, we hosted farmers market events at all our centers in the spring and summer. Our participants loved “shopping” for their free fresh food!



## DAY AT THE CAPITOL

On May 23, 2024, we gathered with other Michigan PACE programs to advocate for our unique care model and the impact it has on aging adults!



# AWARDS



## PRESIDENT AND CEO MARY NABER GIVEN MULTIPLE ACCOLADES

Because of her fierce dedication to our mission President and CEO Mary Naber was recognized in 2024 as the ***PACE Association of Michigan Advocate of the Year***, given the ***National PACE Association Judy Baskins Volunteer Leadership Award***, and named a ***Notable Leader in Health Care by Crain's Detroit Business!***



## DR. KATZMAN NAMED TOP DOC BY HOUR DETROIT

Our Medical Director, Dr. Steven Katzman, was recognized as a ***Top Doc by HOUR Detroit Magazine*** in Hospice/Palliative Care and Internal Medicine. Dr. Katzman has been named a Top Doc every year since 2009!



## USA TODAY 2024 TOP WORKPLACE

We're honored to again be named a ***Top Workplace by USA Today!*** This recognition is based on the feedback of our amazing team!



## IN THE NEWS



### FINDING LOVE AT PACE SOUTHEAST MICHIGAN

A celebration of love held for two of our Sterling Heights participants in October was covered by the ***Detroit Free Press*** and the ***Macomb Daily***, which featured the article as the cover story to the November issue of ***Vitality*** senior magazine.

“(PACE Southeast Michigan) is a wonderful program and what they did for me and Russ is wonderful,” Participant Lynn Sensoli told the Free Press. “They work hard.”



### 9TH PACE SOUTHEAST MICHIGAN CENTER OPENS

The grand opening of our Westland Center was covered by ***Hometown Life*** and ***WLND***, a local cable channel focused on Westland.

WLND featured this quote from Michigan Lt. Governor Garlin Gilchrist: “The role that an institution like PACE Southeast Michigan plays for so many people is that it’s some place they can go to get what they need. When you have that kind of dignity, you are so much closer to being your best, no matter what station you’re in.”

# PHILANTHROPIC IMPACT

We believe in caring for the whole participant, which sometimes goes beyond the scope of healthcare. Since 2016, our *Community Giving Fund* has helped bridge the gap between healthcare and items or assistance participants may need to stay independent in their homes.

In 2024, the *Community Giving Fund* assisted 203 participants by providing essential and emergency items or services!

## In 2024, the *Community Giving Fund* provided:

- 66 utility payments to avoid shutoffs
- 79 large appliances
- 55 small appliances
- 93 pieces of furniture
- 179 moving and rent-related costs
- And so much more!

---

## THANK YOU TO OUR 2024 SPONSORS!

A Serendipity Cakery & Ice Cream Shoppe  
Absopure  
All-Stat Portable  
Shail and Laurie Arora  
Brogan & Partners  
Jeff and Mary Burmeister  
Butler's Superior Cleaning  
CNS Healthcare  
Debbie Condino  
Detroit Cristo Rey High School  
Dragonfly Health  
James and Donna Emch  
Enterprise Fleet Management  
Facilinet  
Gap Advertising  
Golden Way Group  
Dr. Gwen Graddy  
Grand Pad  
Great Lakes Landscape Design  
Kevin and Kelsey Hastings  
Danny and Susan Hawkins  
Henry Ford Health  
Hoekstra Transportation  
Huntington Bank

Ivan and Amy Katz  
Kroger  
Martin and Alicia Klein  
Dr. Manu Malhotra  
Marsh McLennan  
Medstar Mobile Health  
MHT Housing  
Mobile Medical Support  
Roger and Tamala Myers  
Mary and Dr. Mike Naber  
The Orchards Michigan  
Performance Health  
Pointe Alarm  
John and Kathy Polanski  
Presbyterian Villages of Michigan  
Lisa Samerdyke  
Santorio, Inc.  
Sir Speedy  
Jud and Lorna Utley  
James and Sandra Vandenberghe  
WalkWise  
Rev. Samuel and Sandra White  
Zuccaro's Banquets and Catering



### SET THE PACE 5K

Our annual Set the PACE 5K at Stoney Creek Metro Park promotes healthy habits in the community and is one of our largest fundraising events of the year! Our 2024 event was another fun-filled success with 205 attendees and nearly \$20,000 raised! We’re looking forward to this year’s event on Saturday, June 7, 2025.



### BREAKFAST AMONG FRIENDS

Our annual Breakfast Among Friends brings some of our greatest supporters together for a morning of networking and storytelling at the Birmingham Community House. This event is our single largest fundraising day of the year and allows us to showcase the Community Giving Fund impact with supporters. In 2024, we welcomed 173 attendees and raised over \$84,000!



